

SONATE

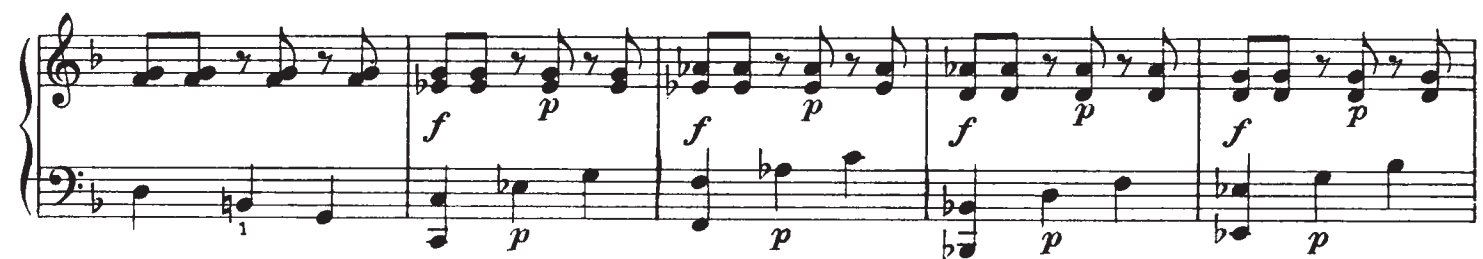
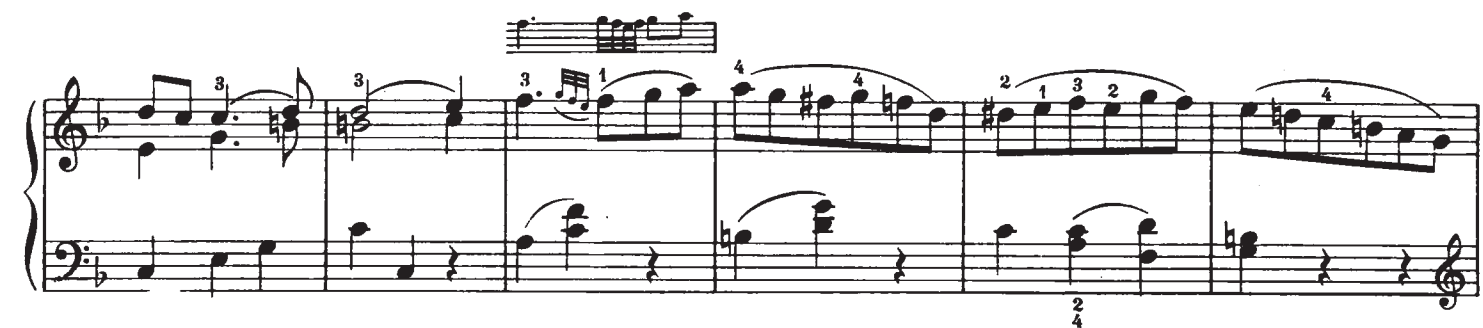
Köchel Nr. 332

Allegro

12

(p non troppo)

Musical score for Sonata in B-flat major, K. 332, by Wolfgang Amadeus Mozart. The score is in 3/4 time and consists of six systems of two staves each. The first system is marked "Allegro" and "(p non troppo)". The second system has a "tr" (trill) marking and a "(p)" (piano) marking. The third system has a "3" marking. The fourth system has a "f" (forte) marking. The fifth system has a "5" marking. The sixth system has a "4" marking. The score includes various musical notations such as notes, rests, slurs, and fingerings.



A musical score for the song "The Rose Tree". The score is written for a piano, with a treble and bass staff. The key signature is one flat (B-flat). The melody is in the treble staff, and the accompaniment is in the bass staff. The melody consists of a series of eighth and sixteenth notes, with some rests. The accompaniment consists of a steady eighth-note pattern in the first measure, followed by rests and then a series of eighth notes. The score is divided into measures by vertical bar lines. Above the first measure, there are fingerings: 4 1 for the treble staff and 1 for the bass staff. Above the second measure, there are fingerings: 2 1 for the treble staff and 1 for the bass staff. Above the third measure, there are fingerings: 5 1 for the treble staff and 2 for the bass staff. Above the fourth measure, there is a fingering: 5 for the treble staff. Above the fifth measure, there is a fingering: 5 for the treble staff. Above the sixth measure, there is a fingering: 5 for the treble staff.

A musical score for the song 'The Rose Tree'. The score is written for voice and piano. The voice part is on a single staff with a treble clef and a key signature of one flat (B-flat). The piano accompaniment is on two staves, with the right hand in treble clef and the left hand in bass clef. The key signature for the piano is also one flat. The music is in 4/4 time. The score consists of two systems. The first system has four measures, and the second system has four measures. The piano accompaniment features a variety of chords and arpeggios, including some with grace notes. The voice part has a melody that is simple and easy to sing.

Musical score for "The Merry Widow" (No. 1). The score is written for piano (p) and forte (f) dynamics. It features a treble and bass staff. The key signature is one flat (B-flat). The tempo is marked "Allegretto". The score includes various musical notations such as notes, rests, and dynamic markings.

Musical score for "The Rose Tree" in G major, 2/4 time. The score is written for piano (p) and includes a key signature of one sharp (F#) and a common time signature (C). The melody is in the treble clef, and the bass line is in the bass clef. The score is divided into two systems. The first system contains measures 1 through 4, and the second system contains measures 5 through 8. The melody features a series of eighth notes in the first system, followed by a trill (tr.) in the second system. The bass line consists of a steady eighth-note accompaniment. The score is marked with a piano (p) dynamic and includes a key signature change to one sharp (F#) in the second system.

Musical score for "The Song of the Lark" by Maurice Strakosky, measures 1-4. The score is in 2/4 time, key of B-flat major, and features a piano (p) dynamic. The melody is in the right hand, and the accompaniment is in the left hand. The score includes trills (tr) and accents (^) over notes.